



P-ISSN: 2349-8528

E-ISSN: 2321-4902

IJCS 2018; 6(1): 238-242

© 2018 IJCS

Received: 17-11-2017

Accepted: 23-12-2017

**VS Borkar**

Department of Soil Science and  
Agril. Chemistry, Dr.B.S.  
Konkan Krishi Vidyapeeth,  
Dapoli. Dist. Ratnagiri. M.S,  
India

**NB Gokhale**

Department of Soil Science and  
Agril. Chemistry, Dr.B.S.  
Konkan Krishi Vidyapeeth,  
Dapoli. Dist. Ratnagiri. M.S,  
India

**SS More**

Department of Soil Science and  
Agril. Chemistry, Dr.B.S.  
Konkan Krishi Vidyapeeth,  
Dapoli. Dist. Ratnagiri. M.S,  
India

**NH Khobragade**

Department of Soil Science and  
Agril. Chemistry, Dr.B.S.  
Konkan Krishi Vidyapeeth,  
Dapoli. Dist. Ratnagiri. M.S,  
India

**RV Dhopavkar**

Department of Soil Science and  
Agril. Chemistry, Dr.B.S.  
Konkan Krishi Vidyapeeth,  
Dapoli. Dist. Ratnagiri. M.S,  
India

**Correspondence****VS Borkar**

Department of Soil Science and  
Agril. Chemistry, Dr.B.S.  
Konkan Krishi Vidyapeeth,  
Dapoli. Dist. Ratnagiri. M.S,  
India

## Influence of phorate and carbofuran insecticides on phosphorous availability and its residues in soil and rice

**VS Borkar, NB Gokhale, SS More, NH Khobragade and RV Dhopavkar**

**Abstract**

An experiment was conducted in with two insecticides, phorate and carbofuran at rates of 10.0 and 16.5 kg ha<sup>-1</sup> respectively, to investigate its effect on the availability of phosphorous in rhizosphere soils of rice (*Oryza sativa* L., variety IR-50). Application of the insecticides stimulated the availability of nitrogen in the rhizosphere soils, and the stimulation was more pronounced with phorate as compared to carbofuran. The residue of Carbofuran and phorate was detected below maximum residue limit of 0.1 mg kg<sup>-1</sup> in grain after harvest.

**Keywords:** phorate, carbofuran, rice, phosphorus and rhizosphere

**1. Introduction**

The major problem associated with the growth of agriculture sector is the use of fertilizers and insecticides throughout India. Although, the use of agricultural chemical has produced significant benefits in increasing crop yields, it has also resulted in various 'non target' impacts such as appearance of some fertilizers and insecticides in surface and groundwater toxicity to animals, shift in weed flora and appearance of resistant weed varieties. It is interesting to note that insecticides frequently applied in modern agriculture mostly belong to the organophosphate and Carbamate groups, but their comparative residual effects on nutrients availability under a particular soil conditions have rarely been reported (Das and Mukherjee, 1994)<sup>[5]</sup>. Insecticidal residues are generally degraded and degradation products are assimilated by soil microorganisms (El-Shahaat *et al.*, 1987; Rache and Coats, 1988)<sup>[10, 19]</sup> resulting in increased population sizes and activities of microorganisms which in turn influences the transformations of plant nutrient elements in soil (Jana *et al.*, 1998; Das and Mukherjee, 2000)<sup>[12, 9]</sup>. On the other hand, there are some insecticides which are not utilizable by soil microorganisms and these types of insecticides are degraded in soil by microorganisms through cometabolism (Bollag and Liu, 1990)<sup>[3]</sup>. It is interesting to note that insecticides frequently applied in modern agriculture mostly belong to the organophosphate and carbamate groups, but their comparative residual effects on microorganisms under a particular soil conditions have rarely been reported (El-Shahaat *et al.*, 1987; Singh and Prasad, 1991)<sup>[10, 22]</sup>. Soil plays an important role in water and chemical movement through it. The soil type has a great important influence on nutrient and pesticides leaching losses as the movement of these nutrients and pesticides in water is affected by the soil characteristics which define their retention. The factors known to influence the fate and behavior of insecticides in soil system. These are chemical decomposition, photochemical decomposition, microbial decomposition, volatilization, movement, persistence, plant or organism uptake and adsorption. Moreover factors such as composition of soil, physical nature of chemical fertilizers and insecticides, soil reaction, nature of the saturating cations on the soil exchange sites and nature of the formulation directly influence the mobility of these compounds/chemicals in the soil system. The total amount of rainfall or irrigation water received, the intensity (water flux) and frequency of received water, all appear to effect movement of these chemicals in soils. Fertilizers and insecticides can move from their initial distribution by a number of processes. Transport of these may be the result of processes such as, the formation of soluble complexes with soil solution components such as dissolved organic matter and metals or the incomplete interaction of these compounds with the solid state organic or inorganic matter in the soil.

Fulfillment of nutritional requirement of hybrid rice through inorganic fertilizers is not only costly but it also deteriorate the soil and water health, as these soils are more hungry than thirsty. The applied fertilizers and pesticides undergo numerous transformations in soil and water hydrolysis, photolysis, oxidation and reduction are some of the most common transformations. Fertilizers and pesticides are costly inputs and need to be managed efficiently for higher nutrient recovery returns.

The first zone includes the laterite and lateritic soils which occupy whole Ratnagiri district and southern portion of Raigad district. The soils are developed from basalt by process of laterization. The soils are acidic in reaction due to leaching of bases. In general, poor in fertility and have high P-fixing capacity. The second zone comprises whole of Thane and remaining northern part of Raigad district. The soils of these zones are Medium black and neutral to slightly alkaline in reaction. They contain free calcium carbonate and are poor in phosphorous content, medium to high in nitrogen and potassium contents. The soils along the west coast of the Konkan (Panvel) is known as Coastal saline soil and it covers an area of about 65,465 ha (Report of the *Khar* Land Development committee, 1982).

## 2. Materials and methods

An experiment was conducted to investigate the effect of Phorate (O, O-diethyl-S-ethylthiomethyl dithiophosphate) and Carbofuran (2, 3-dihydro-2, 2-dimethyl benzofuran-7-yl-N-methylcarbamate) at their recommended field application rates, on the phosphorous availability as well as the residues of the insecticides in the rhizosphere soils of rice. In order to represent these three distinct zones of Konkan, three representative soil field samples, one each from Lateritic, Medium black and Coastal saline soil were collected from different tahsils of Konkan namely Dapoli, Karjat and Panvel. All the locations are the Agricultural Research centers of Dr. Balasaheb Sawant Konkan Krishi Vidyapeeth, Dapoli. At each location one rice growing soil field was selected. From each of the mentioned locations, one sample collected by following standard procedure of soil sample collection. To know the initial soil fertility status the collected soil samples were processed for analysis. (Table 1) The processed surface soil was used for conducting a pot culture experiment. Pot culture experiment was conducted in plastic pots of 10 kg capacity having 30 cm diameter and 45 cm height. Small quantities of pebbles were put at the bottom of the pots and ten kg of soil was filled in each pot. The hybrid rice variety Sahyadri-4, released by Dr. Balasaheb Sawant Konkan Krishi Vidyapeeth, Dapoli in 2008 was taken as a test crop during *Kharif* 2012 and 2013. There were nine treatment combinations in three replication. T<sub>1</sub> (Lateritic soil +RDF), T<sub>2</sub>

(Lateritic soil +RDF+ P<sub>1</sub>), T<sub>3</sub> (Lateritic soil +RDF+ P<sub>2</sub>), T<sub>4</sub> (Medium Black soil +RDF), T<sub>5</sub> (Medium Black soil +RDF+ P<sub>1</sub>), T<sub>6</sub> (Medium Black soil +RDF+ P<sub>2</sub>), T<sub>7</sub> (Coastal saline soil +RDF), T<sub>8</sub> (Coastal saline soil +RDF+ P<sub>1</sub>), T<sub>9</sub> (Coastal saline soil +RDF+ P<sub>2</sub>). Treatment wise fertilizers were added and mixed thoroughly. RDF - Recommended dose of fertilizer i.e. NPK @ 150:50:50 through SSP -Single Super Phosphate, MOP-Muriate of Potash P<sub>1</sub>: Carbamates insecticide: Cabofuron3G@recommended dose (16.5kg ha<sup>-1</sup>); P<sub>2</sub>: Organophosphates insecticide: Phorate10G @ (10.0 kg ha<sup>-1</sup>). Nitrogen @ 150 kg ha<sup>-1</sup> was applied in three splits viz., first dose of 40 per cent N at the time of transplanting, second dose of 40 percent 30 days after transplanting and third dose of 20 percent 60 days of transplanting. Phosphorus @ 50 kg ha<sup>-1</sup> and potassium @ 50 kg ha<sup>-1</sup> were applied in a single dose at the time of transplanting as per the treatments. Pesticides PI (Carbofuron3G) @ recommended doze of 16.5 kg ha<sup>-1</sup> and pesticide PII (Phorate10G) @ recommended doze of 10.0kg ha<sup>-1</sup> was applied as basal doze at the time of transplanting to each pot calculated on the basis of 10 kg soil per pot. The experiment were laid out separately in CRD design with nine treatments and replicated three times for each set of experiments. After puddling and mixing of basal dose of fertilizer in soil, twenty one days old rice seedlings (Variety Sahyandri-4) were transplanted. The soil was kept submerged (under 2.5 cm water) throughout the crop growth period. The various cultural operations were undertaken as and when required, In order to know the effect of various treatments on soil properties periodical soil samples (0-22 cm) were collected from each treatment pot at 30, 60, 90 days after transplanting and at harvest. After processing, the samples were stored in properly labeled corrugated boxes and used for determination of P and pesticides (PI and PII) residues availability in the laboratory by following the standard analytical methods. Available phosphorus was determined by extracting the soil P with 0.5 M NaHCO<sub>3</sub> at pH 8.5. Phosphorus in the extract was determined calorimetrically by using Spectrophotometer as per soil type as outlined by Olsen *et al.*, (1954) [16] and Brays-I method (1945) [4]. Pesticide residues analysis was estimated by QUECHERS methods as described by Sharma (2005) [21]. The data were statistically analyzed by using the standard procedure given by Panse and Sukhatme (1967) [17].

## 3. Result and discussion

The soil samples were collected from Dapoli, Karjat and Panvel representing Lateritic, Medium Black and Coastal saline soil types respectively. Various initial properties of this soil have been determined. The results obtained are presented below in Table1

**Table 1:** physical and chemical properties of the soil

Soil	Mechanical Composition (%)			Textural class	Porosity %	pH	EC dS m <sup>-1</sup>	Org. C. %	CEC Cmole(P <sup>+</sup> ) kg <sup>-1</sup>	Av.N kg ha <sup>-1</sup>	Av. P <sub>2</sub> O <sub>5</sub> kg ha <sup>-1</sup>	Av. K <sub>2</sub> O Kg ha <sup>-1</sup>	IR cm hr <sup>-1</sup>
	Sand	Silt	Clay										
Lateritic soil - Location Dapoli													
0-30	59.52	14.72	25.76	Sandy clay loam	38.10	5.8	0.08	1.8	28.40	298.8	9.1	229.8	2.1
Medium black soil - Location Karjat													
0-30	39.88	24.36	35.76	Clay loam	28.65	7.0	0.14	1.29	40.86	258.3	18.4	270	1.4
Coastal saline soil - Location Panvel													
0-30	33.04	20.48	46.48	Clay	20.60	7.3	3.8	0.78	46.6	312.4	23.4	972.8	0.9

### 3.1 Effect of treatments on changes in phosphorous availability in soil at different growth stages

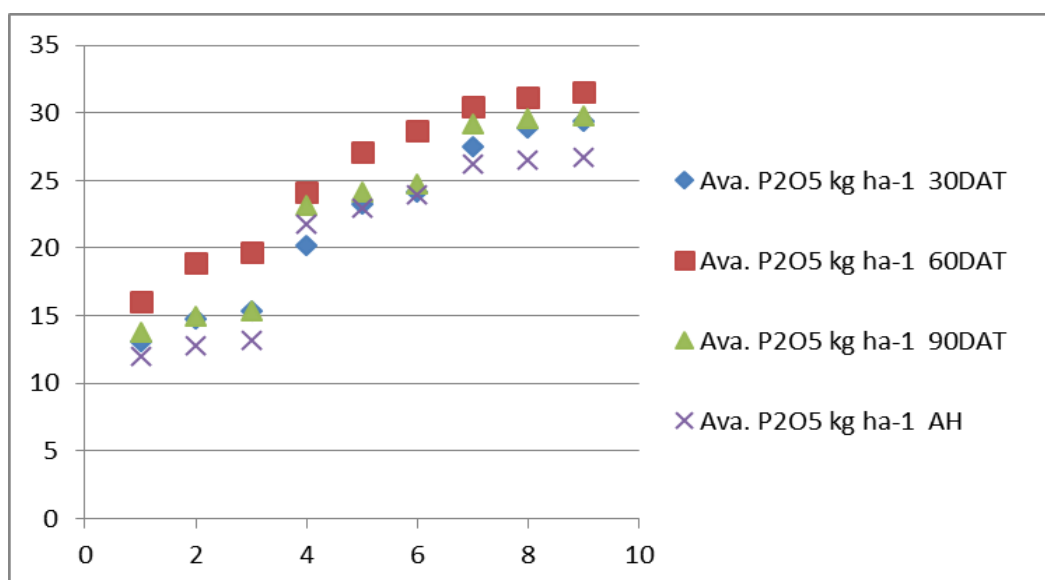
Maximum phosphorous content was recorded at 60DAT stage in all the treatments. The reason for maximum phosphorous content at 60 DAT irrespective of the soil type in all the treatments is attributed to the decomposition of organic matter. On the other hand maximum available phosphorous content in pesticides treated soil at 60 DAT was observed than pesticides untreated treatment. (Table 2)

It was observed that there was an increase in available  $P_2O_5$  content in the pesticides (Carbofuron and Phorate) treated treatments along with 100 per cent RDF as compared to pesticide untreated soil i.e 100 per cent RDF alone irrespective of soil type. Madhuri and Rangaswamy (2000)<sup>[15]</sup>, Das and Mukherjee (1994)<sup>[5]</sup> and Das and Mukherjee (2000b)<sup>[7]</sup> reported the similar results. Das and Mukherjee, (1994)<sup>[5]</sup> also reported the increase in P availability and higher mineralization of P with the incorporation of insecticides Phorate and Carbofuran suggesting that insecticides significantly increased the phosphate solubilizing / mineralizing microorganisms and availability of  $P_2O_5$  in soil. Das *et al.*, (2003)<sup>[8]</sup> reported that application if insecticides

(Phorate, Carbofuron) at their recommended dose stimulated the population of bacteria, actinomycetes and fungi in the rice rhizosphere soils. The phorate was more effective than compared to carbofuron in contributing to the higher value of available phosphorous content.

**Table 1:** Effect of different treatment on available phosphorous at different growth stages of rice

Treatment	Ava. $P_2O_5$ kg ha <sup>-1</sup>			
	30DAT	60DAT	90DAT	AH
T <sub>1</sub> Lateritic soil +RDF	13.1	16.0	13.8	12.0
T <sub>2</sub> Lateritic soil +RDF + P <sub>1</sub>	14.8	18.9	15.0	12.8
T <sub>3</sub> Lateritic soil + RDF + P <sub>2</sub>	15.4	19.7	15.4	13.2
T <sub>4</sub> Med. Black soil + RDF	20.2	24.1	23.2	21.8
T <sub>5</sub> Med. Black soil + RDF + P <sub>1</sub>	23.3	27.1	24.1	23
T <sub>6</sub> Med. Black soil + RDF + P <sub>2</sub>	24.1	28.7	24.7	23.9
T <sub>7</sub> Coastal saline soil +RDF	27.5	30.5	29.2	26.2
T <sub>8</sub> Coastal saline soil +RDF + P <sub>1</sub>	28.9	31.2	29.6	26.5
T <sub>9</sub> Coastal saline soil +RDF + P <sub>2</sub>	29.4	31.6	29.8	26.76
SEm±	0.50	0.53	0.54	0.42
CD@ 1%	2.06	2.15	2.19	1.71



**Fig 1:** Effect of different treatment on available phosphorous at different growth stages of rice

The Phorate was more effective than compared to Carbofuron in contributing to the higher value of available  $P_2O_5$  content. Das and Mukherjee (1998b)<sup>[6]</sup> and Das *et al.*, (2003)<sup>[8]</sup> also showed that the increased in  $P_2O_5$  availability was more in case of Phorate as compared to Carbofuron. The results in the present investigation are in agreement with Parvaze *et al.*, (2005)<sup>[18]</sup> showed that increase in available  $P_2O_5$  in soil with application of Phorate brought about a significant stimulation of growth and activities of PSB which in turn transformed the unavailable form of P into more available form as compared to Carbofuron as well as pesticides untreated treatments. Das and Mukherjee (1998b)<sup>[6]</sup> also showed that the increased in  $P_2O_5$  availability was more in case of Phorate as compared to Carbofuron. Das *et al.*, (2003)<sup>[8]</sup> reported that application if insecticides (Phorate, Carbofuron) at their recommended dose stimulated the population of PSB in the rice rhizosphere soils, and they also observed stimulation was more pronounced with Phorate as compared to Carbofuran resulting in increased population sizes and activities of microorganisms which in turn influences the transformation of plant nutrient in soil and increasing the availability of  $P_2O_5$ .

Maximum available  $P_2O_5$  content was recorded at 60 DAT stage in all the treatments. The reason for maximum  $P_2O_5$  content at 60DAT irrespective of soil type in all the treatment may be partly due to the decomposition of organic matter and submerged conditions. Das *et al.*, (2003)<sup>[8]</sup> reported that, available  $P_2O_5$  attains a highest peak at 60 DAT due to application of insecticides (Phorate, Carbofuron) at their recommended dose at the time of transplanting of rice) over the pesticides untreated treatments. The available  $P_2O_5$  content of soil in all treatments declined at 90 DAT. Similar results were quoted by Das and Mukherjee (1994)<sup>[5]</sup>.

### 3.2 Effect of treatments on residues of pesticides in soil ( $\mu\text{g kg}^{-1}$ )

The data pertaining to the changes in pesticides residues in soil at different growth stages viz. 30, 60, 90 DAT (day after transplanting) and at harvest of rice as influenced by different treatments are presented in Table 3. It can be revealed from the observations that during all four stages (30, 60, 90 and at harvest stage) of sampling, the pesticide residue content was influenced due to the various treatments. The pesticide

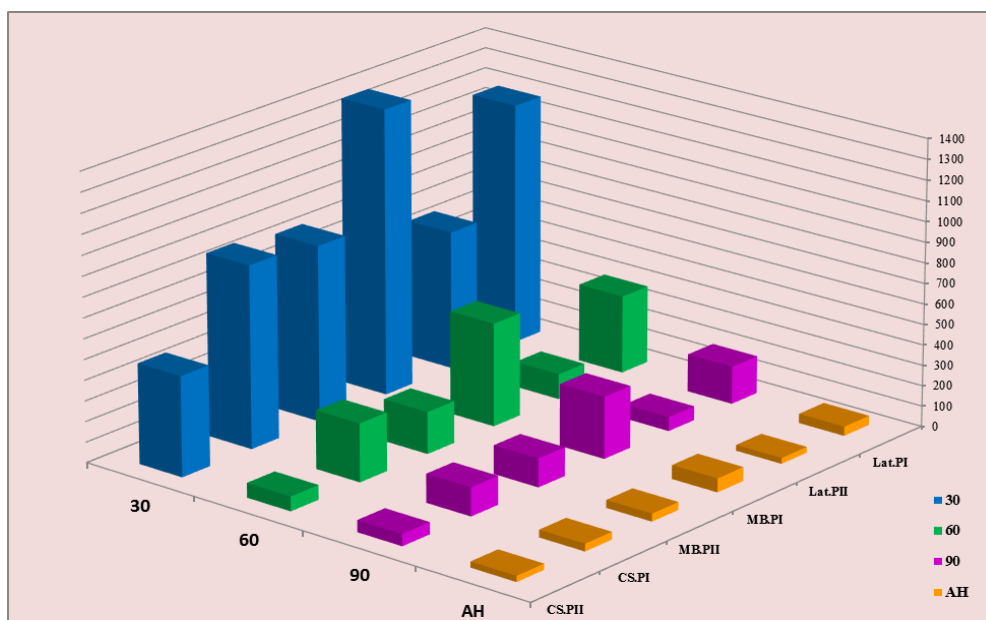
residue content was recorded highest at 30 DAT and afterwards it showed decreasing trend in subsequent observations and it was recorded minimum in the last observation (at harvest) in experiment irrespective of soil type. The decrease from 30 DAT to at harvest stage of rice and it may be because either due to the utilization of pesticides by crop or may be due processes like adsorption, degradation. The results in the present investigation are in agreement with Das and Mukherjee (1998b) [6] and Das *et al.*, (2003) [8].

**Table 3:** Effect of different treatment on pesticides residues in soil at different growth stages of rice

DAT	Residues in soil $\mu\text{g kg}^{-1}$						SE $\pm$	C.D. @ 1%
	Lateritic		Medium black		Coastal saline			
	PI	PII	PI	PII	PI	PII		
30	1104.7	634	1326.4	764.6	920.3	499.5	25.09	54.6
60	440.1	166.3	581.8	260.7	380.3	122.4	15.5	33.9
90	147.7	49.1	258.8	112.6	103.2	40.6	9.73	21.2
AH	58	35.1	88.3	53.4	44.9	23.9	5.36	11.6

Among all the soil types, the trend of pesticide residue content in soil was found viz. Medium black soil > Lateritic soil > Coastal saline soil. Among the various soil type under

present study, the highest pesticides residues (PI and PII) content in soil was found significantly higher in Medium black soil over the other two soil types at all the stages (30, 60, 90 and at harvest stage). On the other hand the residues of both (PI and PII) pesticides in soil was found low in Coastal saline soil at all the stages (30, 60, 90 and at harvest stage). The higher pesticides residues content in smectitic rich soil was also recorded by Yaron (1978) [24]. He further concluded that residues content of pesticides increased with increasing swelling capacity of clay because of swelling type clay. Pesticides residues get absorbed and fixed in Smectite type of clay structure in higher amount whereas the pesticides residues get adsorbed on the Kaolinite type in lower amount. Keiger and Yaron (1975) [13] also concluded that soils which contain Smectite clay retain Pesticides much more strongly than kaolinitic clays. The pesticides residues content in Lateritic soil (Kaolinitic rich) treatment was found low as compared to Medium black soil treatment in the present study. Similar results were quoted by Keiger and Yaron (1975) [13]. This may be due to higher leaching losses of applied pesticides (PI and PII) from Lateritic soil due to high infiltration rate, low CEC of soil as compared to other two soil types under study. Higher leaching losses of pesticides reduce the residues content in soil (Lateritic soil).



**Fig 2:** Effect of different treatment on pesticides residues in soil at different growth stages of rice

The residues of both (PI and PII) pesticides in soil was found low in Coastal saline soil treatment over the other two soil types under study might be because of saline nature of soil which results in to faster degradation of both the pesticides. The faster degradation of pesticides in saline condition than compared to non-saline condition was also reported by Bhattala *et al.*, (2012) [1].

Among the two pesticides (PI and PII) treatment in the present study, the Carbofuron (PI) pesticide residue content was found higher as compared to Phorate (PII) content irrespective of soil at all the stages of rice growth. This may be due to faster degradation rate and low solubility ( $22 \text{ mg l}^{-1}$ ) of Phorate as compared to Carbofuron ( $350 \text{ mg l}^{-1}$ ). According to Bhuvanewari *et al.*, (2011) [2], Phorate residues degraded at faster rate as compared to Carbofuran in various treatments. Carbofuron moderately high affinity for adsorption to soil due to low degradation rate as compared to Phorate.

### 3.3 Pesticides content in grain and straw of rice crop in different soil types and pesticides

The pesticides content in grain and straw of rice recorded during study indicated there were significant differences with the various treatments. The data regarding to the pesticides content in grain and straw of rice (Sahyadri-4) as influenced by various treatments is given in Table 4 for experiment.

#### 3.3.1 Pesticides content in grain

Among the various soil types, the studies of pesticides content in grain was found to be maximum in Medium black soil followed by Lateritic soil and was minimum in Coastal saline soil. The grain content of pesticides in the present study is found below maximum residue limit fixed by WHO and USEPA. Valliappan (1987) [23] reported the similar results. Kumar *et al.*, (2006) [14] the residue of Carbofuron and phorate was detected below maximum residue limit of  $0.1 \text{ mg kg}^{-1}$  in grain after harvest.

**Table 4:** Effect of different treatments on pesticides content in grain and straw of rice

Pesticides content	$\mu\text{g kg}^{-1}$							
	Lateritic		Medium black		Coastal saline		SEM <sub>+</sub>	C.D.
	PI	PII	PI	PII	PI	PII		
Grain	20.56	17.40	29.13	23.56	16.76	14.80	0.66	2.05
Straw	12.53	10.50	16.53	13.76	9.73	7.86	0.35	1.10

PI: Carbofuron, PII: Phorate

### 3.3.2 Pesticides content in straw

Among the various soil types, the pesticides content in straw was found to be maximum in Medium black followed by Lateritic soil and was observed to be minimum in Coastal saline soil. The pesticides content in straw of rice in the present study is found below maximum residue limit fixed by WHO and USEPA. Seiber *et al.*, (1978) <sup>[20]</sup> also showed that the residues of pesticides in rice plants did not exceed the 0.2 mg kg<sup>-1</sup>.

### 4. Reference

- Battala G, Yadamari T, Korivi SK, Gurijala RN, Singhal RK. Study on degradation of Malathion and phorate in various environmental matrices. African Journal of Environmental Science and Technology. 2012; 6(5):224-228.
- Bhuvanawari K, Regupathy A, Kuttalam S. Dissipation Studies in Water for Insecticides Used in Hill Vegetable Cultivation. Pesticide Research Journal. 2011; 23(1):27-31.
- Bollag JM, Liu SY. Biological transformation processes of pesticides. In: Cheng, H.H. (Ed.), pesticides in the Environment. Soil Science Society of America, Madison, WI, USA, 1990, 169-211.
- Bray RH, Kurtz LH. Determination of Total, organic and available forms of phosphorus in soils. Illinois Agricultural Experiment station database. 1945; 59(1):39-46.
- Das AC, Mukherjee D. Effect of insecticides on the availability of nutrients, nitrogen fixation, and phosphate solubility in the rhizosphere soil of rice. Biology and Fertility of Soils. 1994; 18:37-41.
- Das AC, Mukherjee D. Persistence of Phorate and Carbofuran in relation to their effect on the mineralization of C, N, and P in alluvial soil. Bulletin Environmental Contamination and Toxicology. 1998b; 61:709-715.
- Das AC, Mukherjee D. Influence of insecticides on microbial transformation of nitrogen and phosphorus in Typic Ochragualf soil. Journal of Agricultural Food Chemistry. 2000b; 48:3728-3732.
- Das AC, Chakravarty A, Sukul P, Mukherjee D. Influence and persistence of phorate and carbofuran insecticides on microorganisms in rice field. Chemosphere. 2003; 53:1033-1037.
- Das AC, Mukherjee D. Influence of insecticides on microbial transformation of nitrogen and phosphorus in Typic Orchaqualf soil. J Agric. Food Chem. 2000; 48:3728-3732.
- El-Shahaat MS, Othman MAS, Halfawym E, Marei AS. Effect of carbamate and synthetic pyrethroid pesticides on some soil microbial activities. Alexandria J. Agric. Res. 1987; 32:427-438.
- Jaiswal PC. Soil, Water and Plant analysis Text book Reprinted. Kalyani Publication. 2004, 39-42.
- Jana TK, Debnath NC, Basak RK. Effect of insecticides on decomposition of organic matter, ammonification and nitrification in a Fluventic Ustochrept. J. Indian Soc. Soil Sci. 1998; 46:133-134.
- Keiger LV, Yaron B. Parathion recovery of soils after a short contact period. Bulletin of Environment Contamination Toxicology. 1975; 13:714-719.
- Kumar J, Singh G, Palia RK, Walia S, Prasad R, Parmar B. Field appraisal of controlled release formulations of carbofuron against the rice leaf- folder. Indian journal of Agriculture Sciences. 2006; 76(12):732-737.
- Madhuri, Rangaswamy V. Influence of selected insecticides on phosphatase activity in groundnut (*Arachis hypogaea* L.) Soil Journal of Environ Biology. 2000; 23:393-397
- Olsen SR, Cole CV, Watanabe FS, Dean LA. Estimation of available phosphorus in soils by extraction with sodium bicarbonate Circ. U. S. Dept. Agric. 1954, 939.
- Panse VG, Sukhatme PV. Statistical methods for agricultural workers, ICAR, New Delhi, 1967.
- Parvaze A, Wani, Zaidi A, Khan A, Khan Md S. Effect of Phorate on Phosphate Solubilization and Indole Acetic Acid Releasing Potentials of Rhizospheric Microorganisms. Annuals Plant Protection Sciences. 2005; 13(1):139-144.
- Rache KD, Coats J. Comparative biodegradation of organophosphorus insecticides in soil. Specificity of enhanced microbial biodegradation. J Agric. Food Chem. 1988; 36:193-199.
- Seiber JN, Heinrichs EA, Aquino GB, Valencia P, Andrade SL, Argente AM. Residues of carbofuran applied as a systemic insecticide in irrigated wetland rice: Implications for insect control. *International Rice Research Paper*, 1978, 17
- Sharma KK. Pesticide residue analysis manual. II Edition, Published by Indian Council of Agricultural Research. New Delhi, 2005.
- Singh VN, Prasad CR. Effect of phorate and gamma BHC on mineralization of nitrogen in soil. J Indian Soc. Soil Sci. 1991; 39:183-185.
- Valliappan T. Effect of applied pesticides on soil and plant residues in rice. *Pesticides*, 1987; 5(1, 2):53-59.
- Yaron B. Some aspects of surface interactions of clays with organophosphorus pesticides. Soil Science. 1978; 125:210-216.